
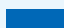

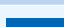




WATERTIGHT PLUGS AND SOCKET-OUTLETS

IEC309 STANDARD TYPE
 RATED VOLTAGE ---- 500V
 RATED CURRENT ---- 16/20A
 PROTECTION DEGREE IP56

Position of ground contact

Type	Frequency	Rated operating voltage	Position of ground contact	Color
(2P+E)	50/60Hz	100 ~ 130 V	Clock face position 4	Yellow 
		200 ~ 250 V	6	Blue 
		380 ~ 415 V	8	Red 
(3P+E)	50/60Hz	200 ~ 250 V	9	Blue 
		380 ~ 415 V	6	Red 
	60Hz	440 ~ 460 V	11	Red 

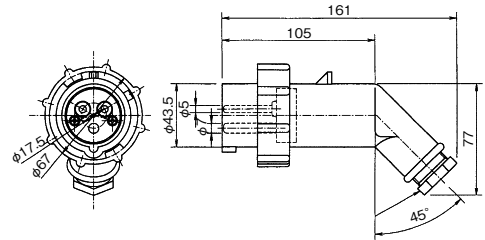
Plug 500V 16/20A

PI2-2B
(2P+⊕)



AC100~130V

AC200~250V



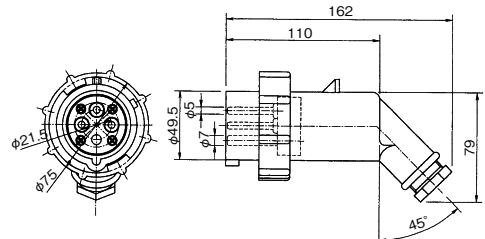
Type	PI2-2B	PI2-3B
Rated voltage	500V 16/20A	500V 16/20A
Rated operating voltage	AC100~130V AC200~250V	AC200~250V AC380~415V AC440~460V
Protection degree	IP56	IP56
Weight	0.18kg	0.22kg
Code No.	5135100(Yellow) 5135200(Blue)	5136200(Blue) 5136380(Red)

PI2-3B
(3P+⊕)



AC200~250V

AC380~415V/ AC440~460V



Plug 500V 16/20A

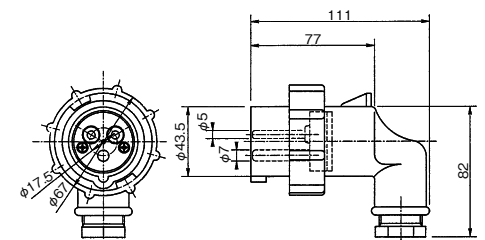
Type	PI2-2B1
Rated voltage	500V 16/20A
Rated operating voltage	AC100~130V AC200~250V
Protection degree	IP56
Weight	0.17kg
Code No.	5137100(Yellow) 5137200(Blue)

PI2-2B1
(2P+⊕)



AC100~130V

AC200~250V



WATERTIGHT PLUGS AND SOCKET-OUTLETS

Socket-outlet 500V 16A

Type	RI2-2	RI2-3
Rated voltage	500V 16A	500V 16A
Rated operating voltage	AC100~130V AC200~250V	AC200~250V AC380~415V AC440~460V
Protection degree	IP56	IP56
Weight	0.43kg	0.46kg
Code No.	5177100(Yellow) 5177200(Blue)	5178200(Blue) 5178380(Red)

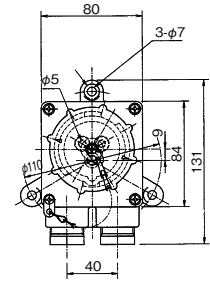
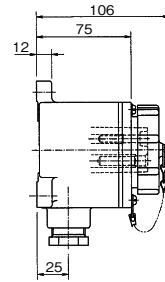
RI2-2
(2P+ \pm)



AC100~130V



AC200~250V



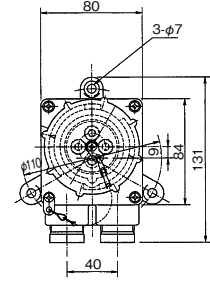
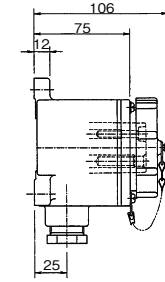
RI2-3
(3P+ \pm)



AC200~250V



AC380~415V/ AC440~460V

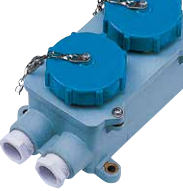


Type	RI2-2-2
Rated voltage	500V 16A
Rated operating voltage	AC100~130V AC200~250V
Protection degree	IP56
Weight	0.80kg
Code No.	51795-3(Yellow) 51795-4(Blue)

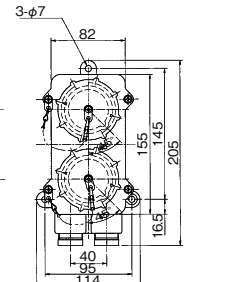
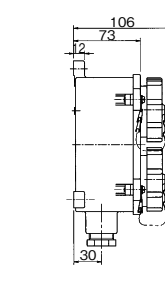
RI2-2-2
(2P+ \pm)



AC100~130V



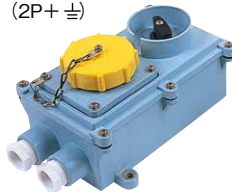
AC200~250V



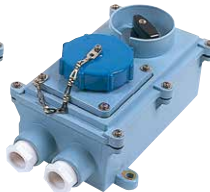
Socket-outlet with interlock switch 500V 16/20A

Type	RSIL2-2	RSIL2-3
Rated voltage	500V 16/20A	500V 16/20A
Rated operating voltage	AC100~130V AC200~250V	AC200~250V AC380~415V AC440~460V
Protection degree	IP56	IP56
Weight	1.02kg	1.07kg
Code No.	5179100(Yellow) 5179200(Blue)	5179-1200(Blue) 5179-1380(Red)

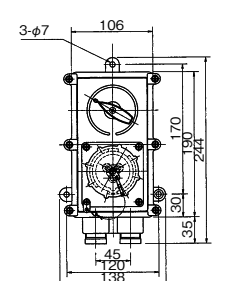
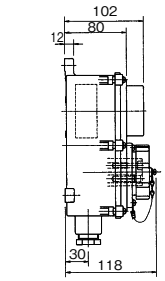
RSIL2-2
(2P+ \pm)



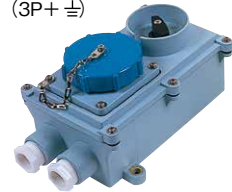
AC100~130V



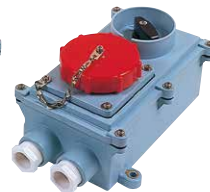
AC200~250V



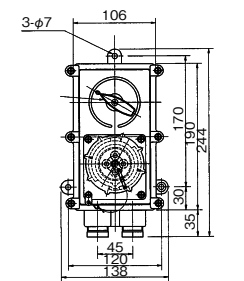
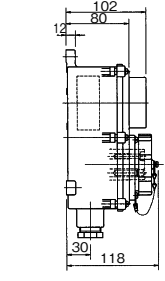
RSIL2-3
(3P+ \pm)



AC200~250V



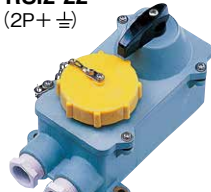
AC380~415V/ AC440~460V



Socket-outlet with switch 250V 16A

Type	RSI2-22
Rated voltage	500V 16/20A
Rated operating voltage	AC100~130V / AC200~250V
Protection degree	IP56
Weight	1.05kg
Code No.	51795-1(Yellow) 51795-2(Blue)

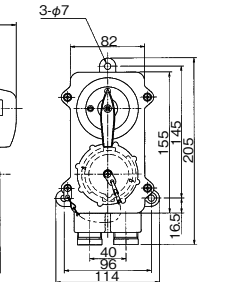
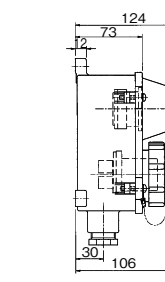
RSI2-22
(2P+ \pm)



AC100~130V



AC200~250V

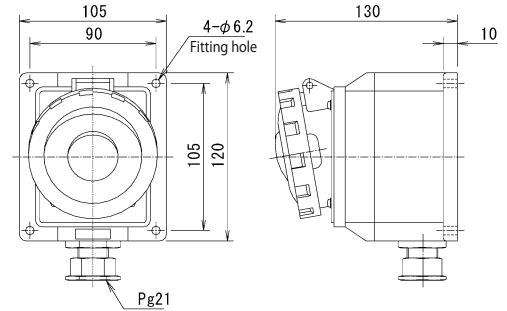


Wiring Fitting

WATERTIGHT PLUGS AND SOCKET-OUTLETS

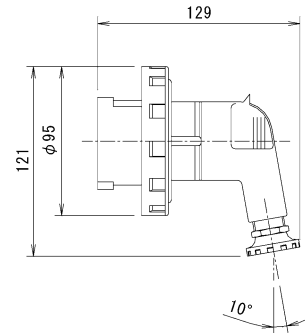
GW62-434 / GW62-437 (2P+E) Socket-outlet (32A)

Type	GW62-434	GW62-437
Rated voltage	500V 32A	
Rated operating voltage	AC100~130V	AC200~250V
Protection degree	IP67	
Weight	0.4kg	
Code No.	A209900432	A209900433



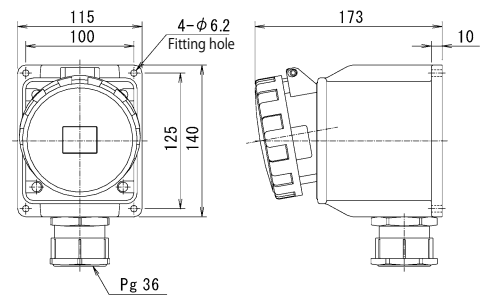
GW60-116 / GW60-119 (2P+E) Plug (32A)

Type	GW60-116	GW60-119
Rated voltage	500V 32A	
Rated operating voltage	AC100~130V	AC200~250V
Protection degree	IP67	
Weight	0.58kg	
Code No.	51793-1P	51793-2P



GW63-445 / GW63-448 (2P+E) Socket-outlet (63A)

Type	GW63-445	GW63-448
Rated voltage	500V 63A	
Rated operating voltage	AC100~130V	AC200~250V
Protection degree	IP67	
Weight	0.88kg	
Code No.	A209900434	A2099004341



GW61-045 / GW61-048 (2P+E) Plug (63A)

Type	GW61-045	GW61-048
Rated voltage	500V 63A	
Rated operating voltage	AC100~130V	AC200~250V
Protection degree	IP67	
Weight	0.58kg	
Code No.	A209900435	A2099004351

