

GEAR PUMP With MOTOR

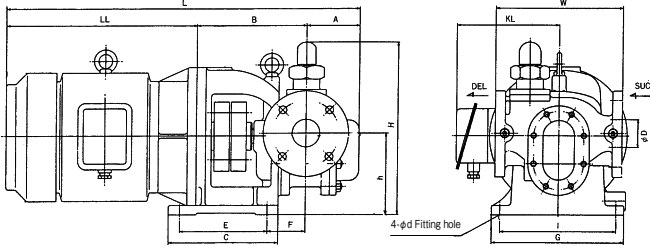
TYPE :MGR /MGF

It's great for use of a small place because of compact design.
Optimal shaft seal is oil seal. Mechanical seal is for MGF.

60Hz

Main purpose

- Fuel oil Lubricating oil
- Supply pump
- Service pump



Model	Diameter Φd(mm)	Motor			Discharge(m3/h)						
		kW	Pole number	min ⁻¹	Pressure(MPa)						
					0.1	0.2	0.3	0.5	0.7		
MGR25	25	0.75	4	1800	3.3	3.0	2.8	—	—		
MGR32	32	1.5			4.2	4.1	3.9	3.6	—		
MGR40A	40	1.5			7.4	6.8	—	—	—		
MGR40B		2.2			—	—	6.8	6.6	—		
MGR50A	50	2.2			9.1	9.0	8.7	—	—		
MGR50B		3.7			—	—	9.0	8.5	8.1		
MGR50Z		2.2			11.0	10.8	—	—	—		
MGR50C		3.7			—	—	10.5	10.3	—		
MGR65A	65	3.7			6	1200	16.8	16.2	16.0	—	—
MGR65B		5.5					—	—	16.2	15.6	15.0
MGR65C		3.7	20.0	19.7			—	—	—		
MGR65D		5.5	—	—			20.0	19.2	—		
MGR65E		7.5	—	—			—	—	19.0		
MGR65G		5.5	22.5	22.0			22.0	—	—		
MGR65H		7.5	—	—			—	21.5	21.0		
MGR80A		80	5.5	29.0			28.5	—	—	—	
MGR80B	7.5		—	28.5	28.0	27.5	—				
MGR80C	7.5		—	—	30.0	29.5	—				
MGR100A	100	11.0	—	—	34.5	34.0	—				
MGF25	25	0.75	6	1200	2.0	1.9	1.8	1.7	—		
MGF32A	32	1.5			3.1	3.0	2.9	2.8	—		
MGF40A	40	1.5			4.9	4.8	4.7	—	—		
MGF50A	50	2.2			6.1	6.0	5.9	5.8	—		
MGR50Z		2.2			7.3	7.1	6.9	6.7	—		

Kinematic viscosity in case of 150 - 200cSt of Discharge

Model	Diameter Φd(mm)	Motor		Dimension (mm)													Weight (kg)		
		kW	Pole number	A	B	LL	L	KL	C	E	F	G	I	d	H	h		W	
MGR25	25	0.75	4	84	184	270	538	175	180	135	63	210	180	14	277	125	200	43	
MGR32	32	1.5		95	195	322	612	190	180	135	74	210	180	14	277	125	200	58	
MGR40A	40	1.5		85	187	322	594	190	200	160	56	230	200	14	317	145	220	65	
MGR40B		2.2		85	197	322	604	200	200	160	56	240	210	14	340	168	220	68	
MGR50A	50	2.2		90	202	322	614	200	200	160	62	240	210	14	333	168	230	80	
MGR50B		3.7		90	192	371	653	210	200	160	62	240	210	14	333	168	230	90	
MGR50Z		2.2		97	209	322	628	200	200	160	69	240	210	14	338	168	230	82	
MGR50C		3.7		97	199	371	667	210	200	160	69	240	210	14	338	168	230	94	
MGR65A	65	3.7		6	115	247	370	732	244	265	195	80	285	250	14	435	190	270	150
MGR65B		5.5			115	247	410	772	244	265	195	80	285	250	14	435	190	270	165
MGR65C		3.7	122		254	370	746	244	265	195	87	285	250	14	435	190	270	154	
MGR65D		5.5	122		254	410	786	244	265	195	87	285	250	14	435	190	270	175	
MGR65E		7.5	122		284	500	906	320	305	240	87	340	290	18	455	210	270	206	
MGR65G		5.5	122		254	410	786	244	265	195	87	285	250	14	435	190	270	177	
MGR65H		7.5	122		284	500	906	320	305	240	87	340	290	18	455	210	270	206	
MGR80A		80	5.5		137	269	410	816	244	260	195	102	285	250	14	464	190	290	189
MGR80B	7.5		137	299	500	936	320	305	240	102	340	290	18	484	210	290	220		
MGR80C	7.5		137	299	500	936	320	305	240	102	340	290	18	484	210	290	225		
MGR100A	100	11.0	152	314	540	1006	320	385	325	122	470	410	18	484	228	320	300		
MGF25	25	0.75	6	84	238	322	644	190	254	210	56	240	210	14	324	160	200	71	
MGF32A	32	1.5		100	254	322	676	200	254	210	72	240	210	14	324	160	200	80	
MGF40A	40	1.5		85	242	322	649	200	254	210	59	240	210	14	349	165	220	82	
MGF50A	50	2.2		90	247	371	708	210	254	210	64	240	210	14	338	165	230	100	
MGR50Z		2.2		97	254	371	722	210	254	210	71	240	210	14	338	165	230	102	

*1 Flange dimensions depend on JIS B 2210-10K *2 Dimensions and the weight show a case of TAIYO electric equipment motor TIF form

GEAR PUMP With MOTOR

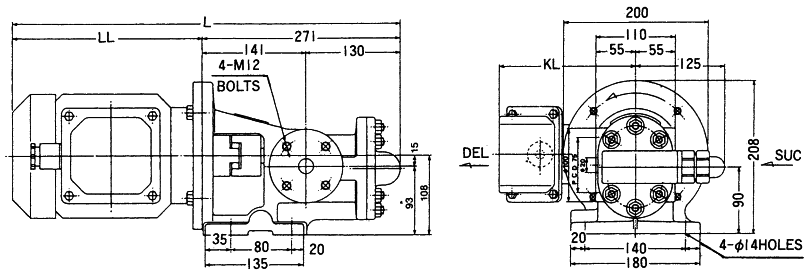
TYPE :MGR20

Small-sized · Light weight · Small capacity sized
Reverse Direction of the bubble, then the change of the delivery direction and suction are possible.

60Hz

Main purpose

- Fuel oil Lubricating oil
- Supply pump
- Service pump



Model	Diameter Φd(mm)	Motor			Discharge(m ³ /h)					Dimension (mm)			Weight (kg)
		kW	Pole number	min ⁻¹	Pressure(MPa)					LL	L	KL	
					0.1	0.2	0.3	0.34	0.4				
MGR20A	20	0.4	6	1200	500	485	470	460	425	270	541	175	38
MGR20B		0.4			910	890	870	860	—	270	541	175	38
		0.75	910	890	870	860	850	322	593	190	45		
MGR20C		0.4	4	1800	1250	1230	1220	1210	—	248	519	165	34
		0.75			1250	1230	1220	1210	1200	270	541	175	38
MGR20D		1.5	1580	1550	1540	1530	—	270	541	175	38		
MGR20E	1.5	1580	1550	1540	1530	1510	322	593	190	45			
MGR20F	1.5	2395	2375	2355	2330	2300	322	593	190	45			
		3020	3000	2990	2980	—	322	593	190	45			

Kinematic viscosity (Discharge of in case of 150 - 200cSt)

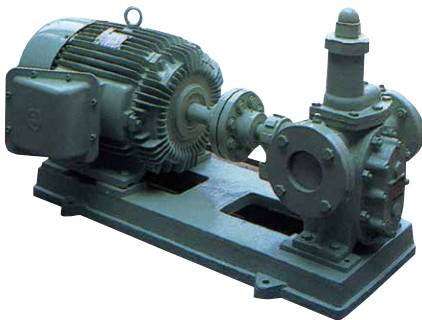
GEAR PUMP

TYPE :GRD

- Fuel oil Lubricating oil
- Supply pump
- Service pump
- Transfer pump

60Hz

Standard shaft seal is Ground packing types.



External dimension is next page.

Model	Diameter Φd(mm)	Speed of revolution (min ⁻¹)	Pressure(MPa)							
			0.1		0.2		0.3		0.5	
			m ³ /h	kW	m ³ /h	kW	m ³ /h	kW	m ³ /h	kW
GRDA15	15	1200	0.7	0.4	0.7	0.4	0.6	0.75	0.6	0.75
		1800	1.2	0.4	1.2	0.4	1.1	0.75	1.0	1.5
GRD20S	20	1800	1.8	0.4	1.8	0.75	1.7	0.75	1.6	1.5
GRD20L		1200	1.8	0.4	1.8	0.75	1.6	1.5	1.5	1.5
GRD25S	25	1800	2.5	0.75	2.5	0.75	2.3	1.5	2.2	1.5
		1200	2.0	0.75	2.0	0.75	1.8	1.5	1.5	1.5
GRD25L	25	1800	3.2	0.75	3.2	1.5	2.8	1.5	2.6	2.2
		1200	2.7	0.75	2.7	1.5	2.5	1.5	2.3	2.2
GRD32S	32	1800	4.2	1.5	4.2	1.5	4.0	2.2	3.8	3.7
		1200	3.5	0.75	3.5	1.5	3.3	1.5	3.1	2.2
GRD32L	32	1800	5.5	1.5	5.5	1.5	5.3	2.2	5.0	3.7
		1200	4.0	0.75	4.0	1.5	3.8	2.2	3.6	2.2
GRD40S	40	1800	6.2	1.5	6.2	1.5	6.0	2.2	5.8	3.7
		1200	5.0	1.5	5.0	1.5	4.8	2.2	4.7	3.7
GRD40L	40	1800	7.8	1.5	7.8	2.2	7.8	3.7	7.3	3.7
		1200	6.0	1.5	6.0	1.5	5.7	2.2	5.5	3.7
GRD40K		1200	7.2	1.5	7.2	2.2	7.0	3.7	6.8	3.7
GRD50S	50	1200	8.0	1.5	8.0	2.2	7.8	3.7	7.6	5.5
GRD50L		1200	10.5	2.2	10.5	3.7	10.2	3.7	9.9	5.5
GRD65A	65	1200	14.5	3.7	14.5	3.7	14.0	5.5	13.8	5.5
GRD65B		1200	17.0	3.7	17.0	3.7	16.5	5.5	16.2	7.5
GRD65C		1200	19.5	3.7	19.0	5.5	18.5	5.5	18.0	7.5
GRD65D		1200	23.0	5.5	23.0	5.5	22.0	7.5	20.0	11.0
GRD80S	80	1200	24.0	5.5	24.0	5.5	23.0	7.5	22.0	11.0
GRD80L		1200	28.0	5.5	28.0	7.5	27.0	7.5	26.0	11.0
GRD80K		1200	30.0	7.5	30.0	7.5	28.0	11.0	27.0	11.0
GRD100A	100	1200	35.0	7.5	34.0	11.0	33.0	11.0	32.0	15.0
GRD100S		1200	39.0	7.5	38.0	11.0	37.0	15.0	36.0	15.0
GRD100L		1200	54.0	11.0	54.0	11.0	53.0	15.0	52.5	18.5

Kinematic viscosity (Discharge of in case of 150 - 200cSt)