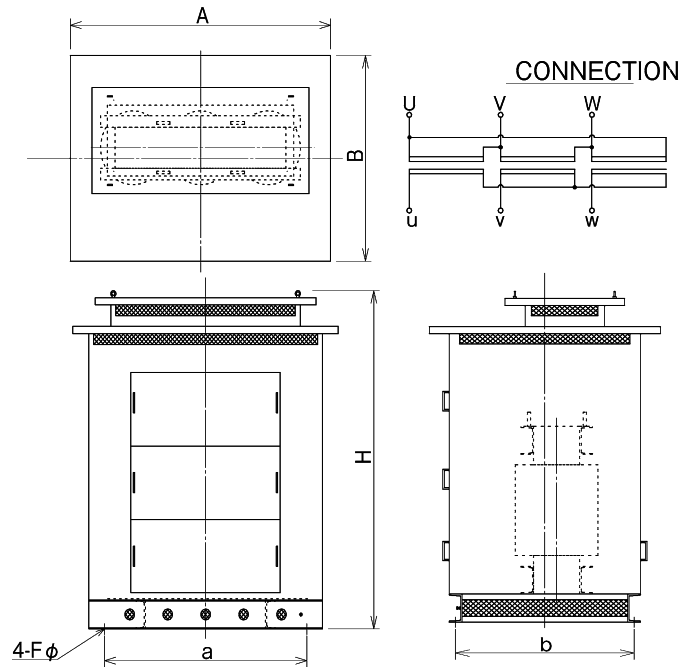


F-CLASS DRY TYPE HIGH VOLTAGE TRANSFORMERS 3-Phase TD-3500 ~ TD-33000



TD-32500



- Available to make a special transformer on request which is out of standard specification.
- Approval inspection for major ship's classification JG, NK, LR, ABS, BV, DNV, GL, CCS, KR and CR are possible.
- SANSHIN transformers are applied with JEC-2200-1995, JEM-1273-1997

Specifications

Phase	3
Frequency	60Hz
Insulation class	F
Connection	Δ-Y

Dimension

Model	Capacity (KVA)	A (m/m)	B (m/m)	H (m/m)	a (m/m)	b (m/m)	F (m/m)	Weight (kg)	Code no.
TD-3500	500	1,500	1,100	1,800	1,000	800	24	1,600	A06010003500
TD-31000	1,000	1,500	1,150	2,000	1,000	850	24	2,300	A06010031000
TD-31500	1,500	1,950	1,200	2,300	1,500	870	24	3,200	A06010031500
TD-32000	2,000	2,000	1,400	2,350	1,500	1,070	24	3,900	A06010032000
TD-32500	2,500	2,100	1,450	2,350	1,600	1,120	24	4,500	A06010032500
TD-33000	3,000	2,350	1,600	2,600	1,700	1,270	24	5,500	A06010033000