



Magnet Horn E150

E150 Magnet horn is compact and lightweight body driven by electric power source.

Tone is generated via electro-magnet to diaphragm vibration. The horn unit and oscillator are one unit. The working voltage is DC24V as standard, AC100V and 20V are available as option with a converter. Heater is available for use in cold area.



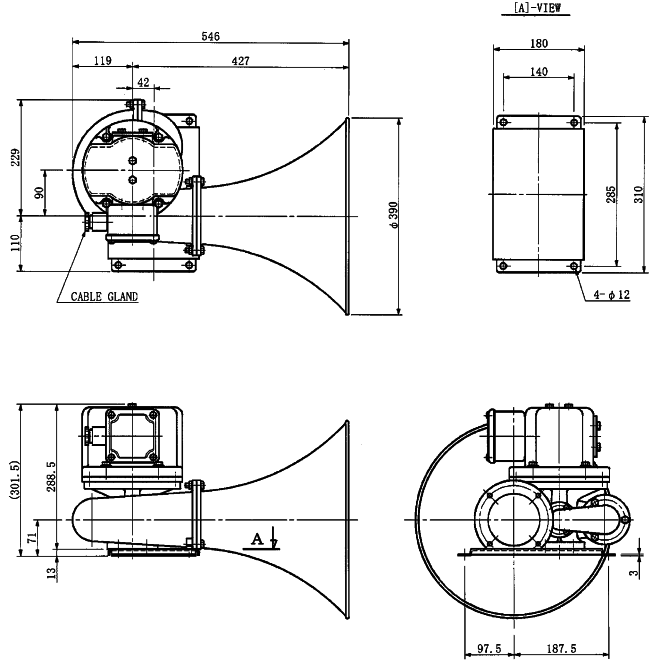
E150



Blow switch



Heater switch



Model	Protection degree	Type approval No.	Fundamental Frequency (Hz)	Sound level 1/3rd Octave	Voltage		Length (mm)	Horn Dia. (mm)	Weight. (kg)	Code No.
					Ossillator	Heater				
E150	IP56	1519	320	Over 130dB/1m	DC24V 16A	AC100/220V	546	390	15	A081900001
E150-H (with heater)						DC24V	558		22	A081900002

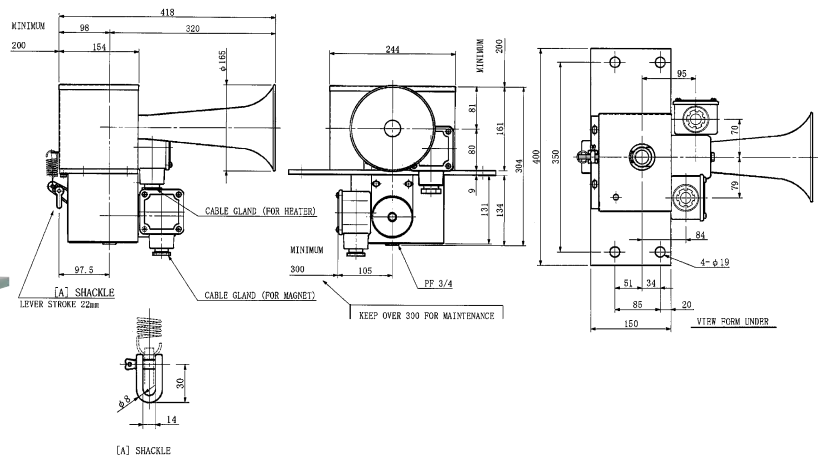
Air horn A100/85AL Series

A100 Series air horn employs a diaphragm driven by compressed air. Operation is controlled either manually or via a solenoid. The lightweight body is easy installation.

Heater is available for use in cold area.



A100EH



Model	Protection degree	Type approval No.	Fundamental Frequency (Hz)	Sound level 1/3rd Octave	Voltage		Air Consumption (L/S)	Length (mm)	Horn Dia. (mm)	Weight. (kg)	Code No.
					Ossillator	Heater					
A100	IP56	1466	310	Over 130dB/1m	Manual Lever	-	15	366	165	4.6	A080100009
A100E		1464			-	6.6				A080100010	
A100EH (with heater)		1465			AC100V 1φ 0.2A AC220V 1φ 0.1A DC24V 0.8A	AC100/220V				12.7	A080100011
85AL		1089	280		Manual Lever	-		11.0		A080100012	
85EAL		1090			AC100V 1φ 0.2A AC220V 1φ 0.1A DC24V 0.8A	-		14.0		A080100013	
85EAL-H (with heater)		1091			AC100/220V	23.0		A080100014			