

CLASS 2 WHISTLE
Vessel length overall 75m to 200m

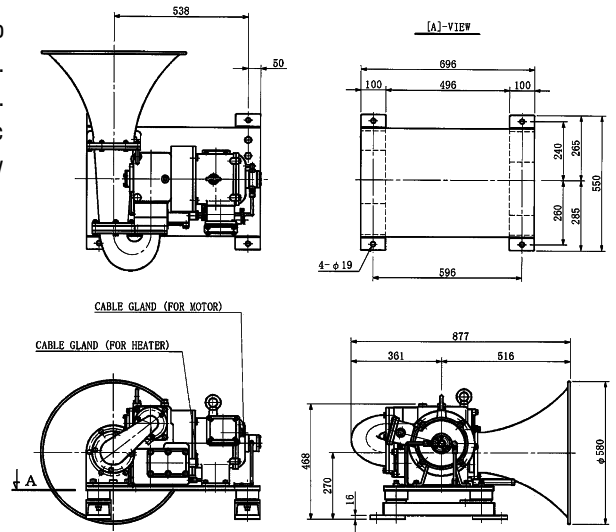


Piston Horn

MH550H Piston horn is electrically driven, and employs a motor to drive reciprocating piston mechanism to produce a powerful tone. The motor is only operated on blowing for low power consumption. MH550H is just required electrical wiring without pneumatic connections for installation on the foremast. Heater and snow guard are available for use in cold area.



MH550



Model	Protection degree	Type approval number	Frequency (Hz)	Sound level	Voltage		Length (mm)	Horn dia. (mm)	Weight (kg)	Code No.
					Motor	Heater				
MH550	IP56	1088	135	138dB/Over 1m	AC220V 3φ 18.6A	AC100/220V	877	580	167	A08040006
MH550-H(Heater)					AC440V 3φ 9.3A				176	A08040005

Air Horn

Air horn employs a diaphragm driven by compressed-air. Operation is controlled either manually or via a solenoid. Diaphragm is adapted a new material for low air consumption and extremely long life. Heater and snow guard are available for use in cold area.



A180ESS



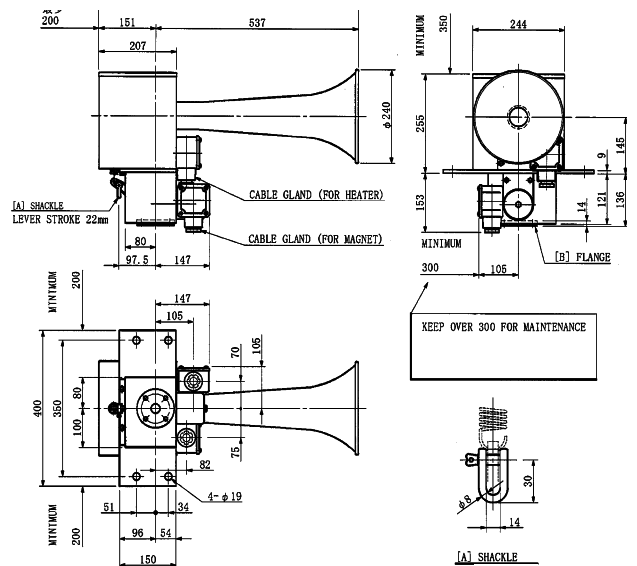
A150ESSH



A150ESH



A150EH



Model	Protection degree	Type approval number	Frequency (Hz)	Sound level	Voltage		Air consumption (L/s)	Length (mm)	Horn dia. (mm)	Weight (kg)	Code No.
					Solenoid	Heater					
A180ESS	IP56	—	180	138dB/Over 1m	AC100V 1φ 0.2A AC220V 1φ 0.1A DC24V 0.8A	AC100/220V	35	838	400	25.0	A080100001
A180ESSH(Heater)		—						889		31.0	A080100002
A150ESS		1473	655					19.5		A080100003	
A150ESSH(Heater)		1474	688					25.0		A080100004	
A150ES		1498	963				31.0	A080100005			
A150ESH(Heater)		1499	984				36.5	A080100006			
A150E		1470	1127				32.0	A080100007			
A150EH(Heater)		1471	1148				37.5	A080100008			

Anti-vibration mount (Option)

Anti vibration rubber mount reduce the vibration transmission to the rest of ship's hull.



Whistle