

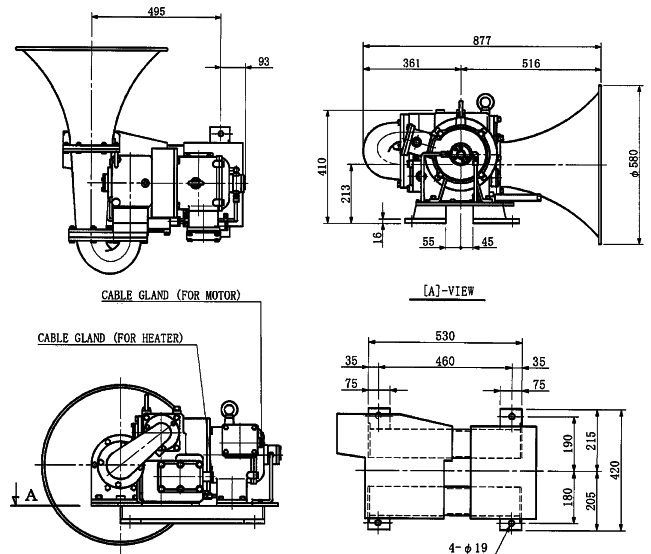


### Piston horn MH700

Piston horn is electrically driven, and employs a motor to drive reciprocating piston mechanism to produce a powerful tone. The motor is only operated on blowing for low power consumption. MH700H is just required electrical wiring. Pneumatic supply is not required for installation on the foremast. Heater and snow guard are available for use in cold area.



MH700-H



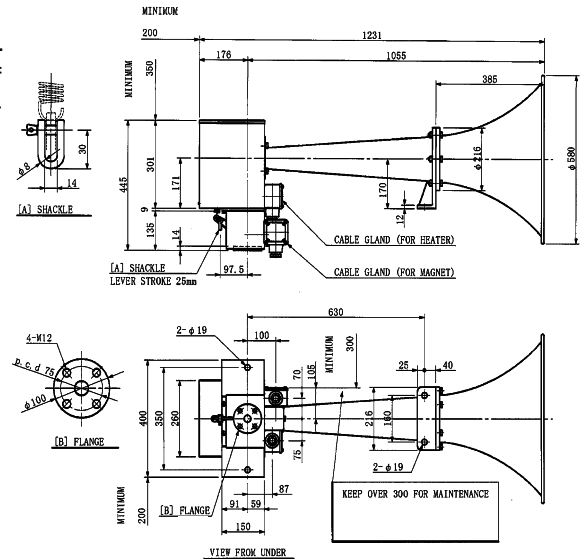
Model	Protection degree	Type approval number	Frequency (Hz)	Sound level	Voltage		Length (mm)	Horn dia. (mm)	Weight (kg)	Code No.
					Motor	Heater				
MH700	IP56	1877	135	143dB/Over 1m	AC220V 3φ 27.0A	AC100/220V	877	580	143	A08040007
MH700-H(Heater)		1876			AC440V 3φ 13.5A				152	

### Air Horn A200 Series

A200 series air horn employ a diaphragm driven by compressed-air. Operation is controlled manual and solenoid. Diaphragm of A200ES-B and A200ESH-B is a new material for low air consumption and extremely long life. Heater and snow guard are available for use in cold area.



A200ESH-B



Model	Protection degree	Type approval number	Frequency (Hz)	Sound level	Voltage		Air consumption (L/s)	Length (mm)	Horn dia. (mm)	Weight (kg)	Code No.
					Solenoid	Heater					
A200ES	IP56	1640	128	143dB/Over 1m	AC100V 1φ 0.2A	AC100/220V	50	1215	580	44	A080100015
A200ESH(Heater)		1642						1231		47	
A200ES-B		4208			DC24V 0.8A		35	1215		40	A080100017
A200ESH-B(Heater)		4209						1231		44	A080100018

### Air Filter (Option)

Connecting an air filter to the air inlet port of air horn, it prevents from sticking the foreign matter in the valve.

