

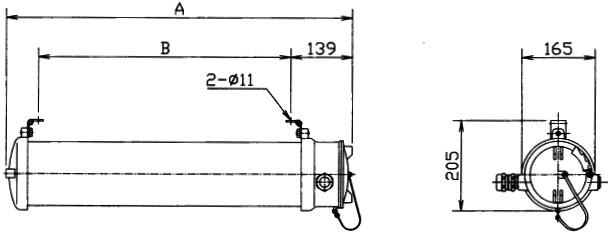
EXPLOSION PROOF FLUORESCENT CEILING LIGHT XFR/XFF

- Voltage : AC100V 60Hz, AC100V 50Hz, AC110V 60Hz, AC110V 50Hz
AC220V 60Hz, AC220V 50Hz, AC230V 60Hz, AC230V 50Hz
(AC240V 60Hz, AC240V 50Hz is available)
- Material : Body : Marine grade aluminium alloy
Globe : Polycarbonate or glass tube
- Lamp : T8 bi-pin G13, G11 compact fluorescent PL lamp
- Terminal block (plug in terminal block)
Up to 10mm² (rigid wire), 6mm² (flexible wire) Terminals supplied for L, N, PE looping possible
- Standard : 2 chromed zinc articulated brackets for ceiling mounting
Option : stainless steel brackets and U-bolts type
- Cable entries : 2 x 3/4"NPT (2xM20 option)
- Ambient temperature range : -20°C to +55°C
- Protection degree : IP67
- Certificate : ATEX II2G and D EExdIIC-T6 ZONE 1 + ZONE 2

● NK type approval : TA10092M

● em : 1 hour 30 minutes or 3 hours duration emergency battery type

XFR/XFF

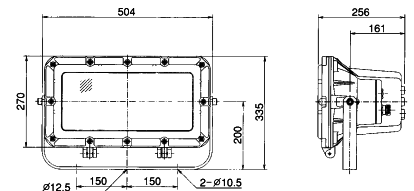


Model	Capacity	Voltage (V)	Frequency (Hz)	Dimension (mm)		Weight (kg)	Code No.
				A	B		
XFR-120	1x18/20W	100	60	780	565	6	A1515000811
		110					A1515000831
		220					A1515000911
		230					A1515000821
XFR-140	1x36/40W	100	60	1380	1170	8	A1515000611
		110					A1515000531
		220					A1515000711
		230					A1515000631
XFF-220	2x18/20W	100	60	780	565	6	A1515000321
		110					A1515000331
		220					A1515000411
		230					A1515000341
XFF-240	2x36/40W	100	60	1380	1170	8	A1515000121
		110					A1515000131
		220					A1515000211
		230					A1515000151
XFR-120em	1x18/20W	100	60	780	565	7	A1515001211
		110					A1515001212
		220					A1515001213
		230					A1515001214
XFR-140em	1x36/40W	100	60	1380	1170	9	A1515001091
		110					A1515001092
		220					A1515001093
		230					A1515001094
XFF-220em	2x18/20W	100	60	780	565	7	A1515001231
		110					A1515001232
		220					A1515001233
		230					A1515001234
XFF-240em	2x36/40W	100	60	1380	1170	9	A1515001081
		110					A1515001082
		220					A1515001083
		230					A1515001084

EXPLOSION PROOF FLOOD LIGHT XSF/XQF

- Voltage : AC230V 60Hz, AC230V 50Hz
(AC220V 60Hz, AC220V 50Hz is available)
- Body : Marine grade aluminium alloy
Front glass : 12mm toughened glass
- Ballast : Built-in type
- Lamp : Sodium lamp 70W, 150W, 250W, 400W
Metal Halide lamp 250W, 400W,
Halogen lamp 55W, 70W
- Terminal block : Up to 6mm² L,N,PE
- Certificate : ATEX II2G EExdIIB-T5~T1 ZONE 1 + ZONE 2

XSF-400P



● NK type approval : TA10093M

- Cable entries : 1 x M20 + 1 x M20 blank plug
- Ambient temperature range : -20°C to +55°C
- Protection degree : IP66

Model	Capacity	Version	Voltage (V)	Frequency (Hz)	Weight (kg)	Temperature class	Code No.
XSF-150P	70W	High pressure Sodium lamp	230	60	17	T3	A141100019
XSF-150P	150W				17	T3	A141100020
XSF-250P	250W				18	T3	A141100012
XSF-400P	400W				20	T2	A141100003
XQF-250P	250W	Metal Halide lamp	230	60	18	T3	A141100042
XQF-400P	400W				20	T2	A141100004
XEF110P	2 x 55W	Halogen lamp	H3 12V	50/60	13	T5	A141100043
XEF140P	2 x 70W		H3 24V		13	T5	A141100044