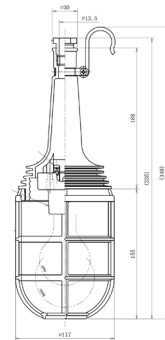


# HAND LAMPS AND OPTION PARTS

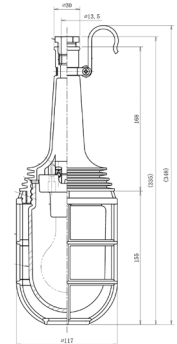
## NT-100A N.W.T. hand lamp

Rated voltage	250V
Applicable lamp	IL100W
Lamp holder	E26
Globe type	S90A
Guard	Clear PC
Body material	PBT
Protection degree	IP20
Weight	0.5kg
Code No.	6603T



## WT-60A W.T. hand lamp

Rated voltage	250V
Applicable lamp	IL60W
Lamp holder	E26
Globe type	S90A
Guard	Clear PC
Body material	PBT
Protection degree	IP56
Weight	0.8kg
Code No.	6602T1



## Option component parts

### Guard

Model	Material	Applicable product	Code No.
G-A1	Brass (Chromium plating)	L-1 type	A161700107
G-A2		L-1 type and WT-60/100	A161700108
G-L1R	PC (Red)	L-2 type	B316172
G-L2R		L-2 type and WT-60/100	B3D02336R



G-A1



G-L1R



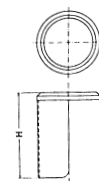
G-A2



G-L2R

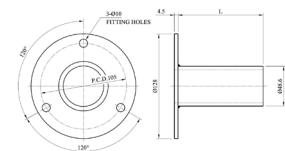
### Shading plate

Model	H	Applicable product	Code No.
LSP-1	100	L-1 type	B4D009961
LSP-2	165	L-2 type	B4D05786A



### Fitting flange of wall light

Model	L	Code No.
LPF-4060	60	B4D009971
LPF-40120	120	B4D009972



### Hook bolt & Rubber bushing

Model	Code No.
Hook bolt	B47165
Rubber bushing	B4D04783A



Applicable lamp	24V	100V	110V	220V	Product model
KG100W E26	-	A47010023	A47010039	A470101465	NT-100A