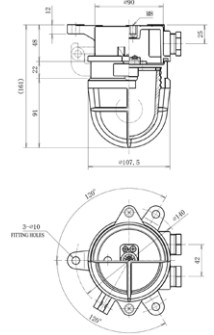


PENDANT LIGHTS (L-TYPE SERIES)

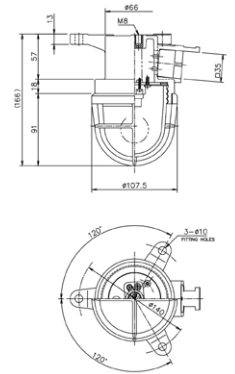
L-1E W.T. Pendant Light

Rated voltage	125V
Applicable lamp	IL20W
Lamp holder	B15
Globe type	S80A
Guard	Clear PC
Body material	PBT
Protection degree	IP56
Weight	0.81kg
Code No.	6103T



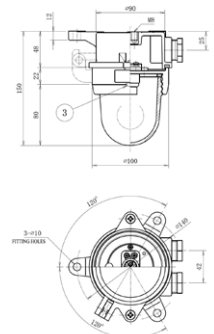
L-1C W.T. Pendant Light (Coaming type)

Rated voltage	125V
Applicable lamp	IL20W
Lamp holder	B15
Globe type	S80A
Guard	Clear PC
Body material	PBT
Protection degree	IP44
Weight	0.72kg
Code No.	6105T



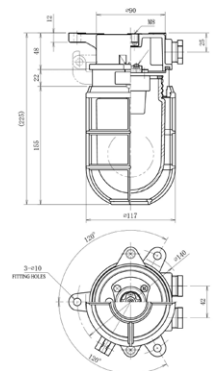
L-10 W.T. Pendant Light Without guard

Rated voltage	125V
Applicable lamp	IL20W
Lamp holder	B15
Globe type	S80A
Guard	-
Body material	PBT
Protection degree	IP56
Weight	0.78kg
Code No.	6101T-00



L-2E W.T. Pendant Light

Rated voltage	250V
Applicable lamp	IL60W
Lamp holder	E26
Globe type	S90A
Guard	Clear PC
Body material	PBT
Protection degree	IP56
Weight	1.0kg
Code No.	6104T1



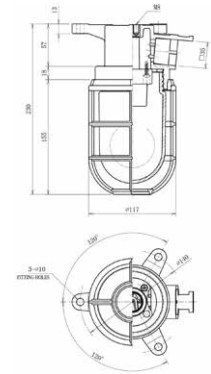
Applicable lamp	24V	100V	110V	220V	Product Model
KB10W BA15D	A47030008		-		L-1
KB20W BA15D	A47030009		-		L-1
KG60W E26	-	A47010022	A47010055	A47010146	L-2

PENDANT AND WALL LIGHTS (L-TYPE SERIES)

L-2C

W.T. Pendant Light (Coaming type)

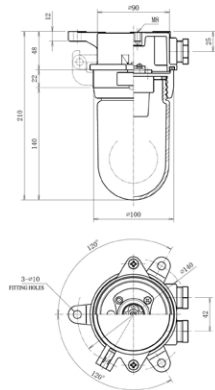
Rated voltage	250V
Applicable lamp	IL60W
Lamp holder	E26
Globe type	S90A
Guard	Clear PC
Body material	PBT
Protection degree	IP44
Weight	0.93kg
Code No.	6106T1



L-20

W.T. Pendant light Without guard

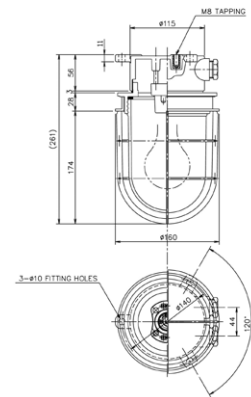
Rated voltage	250V
Applicable lamp	IL60W
Lamp holder	E26
Globe type	S90A
Guard	-
Body material	PBT
Protection degree	IP56
Weight	0.92kg
Code No.	3102T-00



NS-SA103

W.T. Pendant light

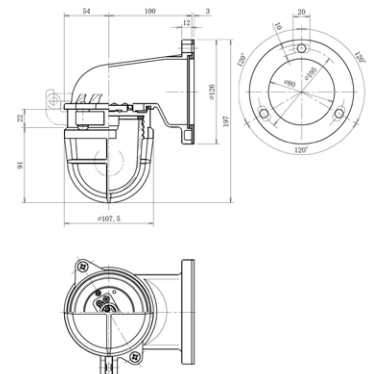
Rated voltage	250V
Applicable lamp	IL100W
Lamp holder	E26
Globe type	S120A
Guard	Brass
Body material	PBT
Protection degree	IP56
Weight	2.1kg
Code No.	A16070010



LBF-1

W.T. Wall light

Rated voltage	125V
Applicable lamp	IL20W
Lamp holder	B15
Globe type	S80A
Guard	Clear PC
Body material	PBT
Protection degree	IP56
Weight	0.85kg
Code No.	6113T



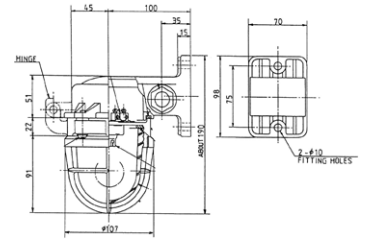
Marine Incandescent Lights

Applicable lamp	24V	100V	110V	220V	Product Model
KG60W E26	-	A47010022	A47010055	A47010146	L-2
KG100W E26	-	A47010023	A47010039	A470101465	NS-SA103
KB10W BA15D	A47030008		-		LBF-1
KB20W BA15D	A47030009		-		LBF-1

WALL LIGHTS (L-TYPE SERIES)

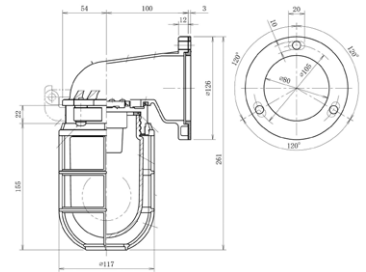
LB-1 W.T. Wall light

Rated voltage	125V
Applicable lamp	IL20W
Lamp holder	B15
Globe type	S80A
Guard	Clear PC
Body material	PBT
Protection degree	IP56
Weight	0.87kg
Code No.	6111T



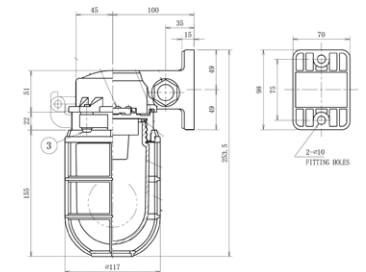
LBF-2 W.T. Wall light

Rated voltage	250V
Applicable lamp	IL60W
Lamp holder	E26
Globe type	S90A
Guard	Clear PC
Body material	PBT
Protection degree	IP56
Weight	1.04kg
Code No.	6114T1



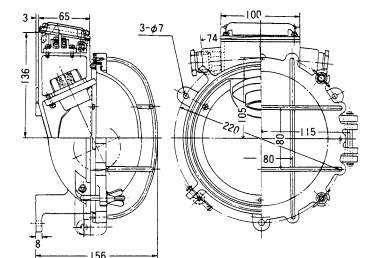
LB-2 W.T. Wall light

Rated voltage	250V
Applicable lamp	IL60W
Lamp holder	E26
Globe type	S90A
Guard	Clear PC
Body material	PBT
Protection degree	IP56
Weight	1.04kg
Code No.	6112T1



W W.T. Wall light

Rated voltage	250V
Applicable lamp	IL60W
Lamp holder	E26
Globe type	F175A
Material	PBT or Brass
Protection degree	IP56
Weight	5.5kg
Code No.	A16020024



Applicable lamp	24V	100V	110V	220V	Product Model
KB10W BA15D	A47030008		-		LB-1
KB20W BA15D	A47030009		-		LB-1
KG60W E26	-	A47010022	A47010055	A47010146	LB/LBF-2/W