

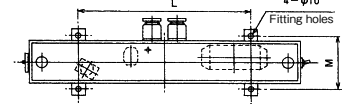
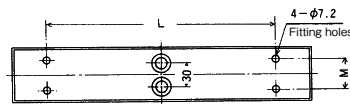
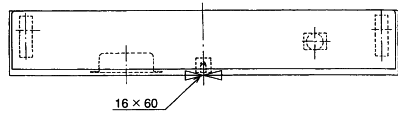
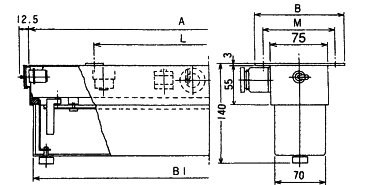
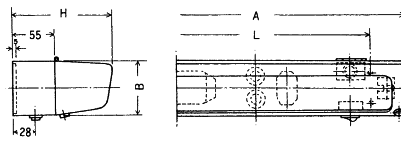
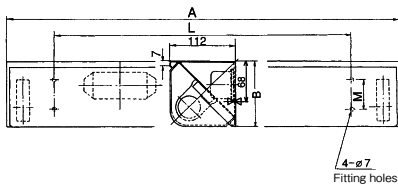
# FLUORESCENT WALL LIGHTS

**FLW/FLBTM Series** 7.5BG7/2·N9.5 IP20/56 5~45°C

N.W.T. Fluorescent passage light  
(with milky acrylic diffuser)  
**FLW-2105**

N.W.T. Fluorescent berth/mirror/table light  
(with milky acrylic diffuser)  
**FLBTM-8109/1109/5109/2109**

W.T. Fluorescent berth/mirror/table light  
(with milky acrylic diffuser)  
**FLBTM-8117/1117/5117/2117**



Model	Dimension (mm)				
	A	B	L	M	H
FLW-2105	665	112	500	50	112
FLW-4105	1290	112	1000	50	112

Model	Dimension (mm)				
	A	B	L	M	H
FLBTM-8109	320	60	290	30	115
FLBTM-1109	380	70	290	40	130
FLBTM-5109	480	70	360	40	130
FLBTM-2109	650	70	480	40	130

Milky globe only

Model	Dimension (mm)				
	A	B	B1	L	M
FLBTM-8117	399	125	394	320	100
FLBTM-1117	399	125	394	320	100
FLBTM-5117	499	125	494	320	100
FLBTM-2117	655	125	660	500	100

Milky globe only

**Specification** · Low power factor, Glow starter type without fluorescent lamp

**Material** · Body : steel  
· Goobe : Acrylic (Milky)

**Lamp** · JIS standard lamp tube : G5 8W  
· JIS standard lamp tube : G13 10W / 15W / 20W / 40W

**Option** · on/off switch and socket

**Connection** · 05/09 : coaming

· 17 : 20Fx2  
· Terminal board : JIS F8812/O-20-2P/4P

**Optional specification** · IEC standard lamp type · R (with emergency lamp)  
· 20W High power factor · Clear globe  
· 50Hz type

Model	Voltage / Frequency Code No.			Protection degree IP	Weight kg
	AC100V60Hz	AC115V60Hz	AC220V60Hz		
FLW-2105 / R	A15110001 / A15110002	A151100010 / A151100020	A1511000101 / A151100023	IP20	2.8
FLW-4105 / R	A15110005 / A15110006	A151100052 / A151100062	A151100053 / A151100061	IP20	4.3
FLBTM-8109 / R	A150700062 / A150700065	A150700063 / A150700066	A150700064 / A150700067	IP20	1.4
FLBTM-1109 / R	A150700068 / A150700073	A150700069 / A150700074	A150700072 / A150700075	IP20	1.7
FLBTM-5109 / R	A150700651 / A150700656	A150700654 / A150700657	A150700655 / A150700658	IP20	1.8
FLBTM-2109 / R	A150700652 / A150700659	A150500211 / A150500214	A150700033 / A150500215	IP20	2.5
FLBTM-8117 / R	A150900341 / A150900343	A150900342 / A150900344	A150700371 / A150900345	IP56	2.5
FLBTM-1117 / R	A1509003115 / A1509003116	A150900311 / A1509003117	A150900314 / A1509003118	IP56	2.6
FLBTM-5117 / R	A150900324 / A150900326	A150900321 / A150900327	A1509003210 / A150900329	IP56	2.8
FLBTM-2117 / R	A150900353 / A150900355	A150900354 / A150900356	A150900352 / A150900357	IP56	3.1

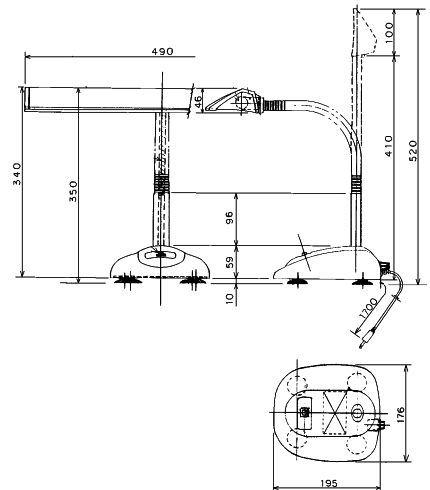
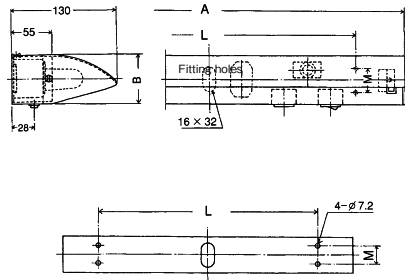
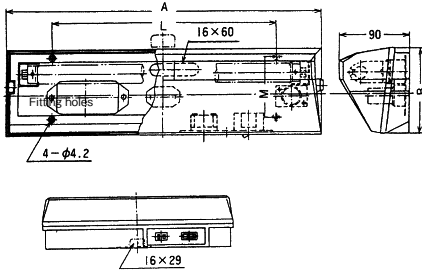
# FLUORESCENT WALL LIGHTS AND DESK LIGHTS

**FLBTM / KS Series**    7.5BG7/2 · N9.5    IP20    5~45°C

N.W.T. fluorescent berth / mirror /  
table light  
(with milky acrylic diffuser)  
**FLBTM-8115/1115/5115**

N.W.T. fluorescent berth / mirror /  
table light  
(without diffuser)  
**FLBTM-8104/1104/5104/2104**

N.W.T. fluorescent desk light  
(without on/ off switch)  
**KS-1558**



Model	Dimension (mm)				
	A	B	L	M	幅
FLBTM-8115	393	110	280	78	90
FLBTM-1115	393	110	280	78	90
FLBTM-5115	490	110	340	78	90

Model	Dimension (mm)				
	A	B	L	M	幅
FLBTM-8104	320	60	290	30	130
FLBTM-1104	380	60	290	30	130
FLBTM-5104	480	60	360	30	130
FLBTM-2104	650	60	500	30	130

\* with 1.7m relay cable, plug and switch

**Specification** · Low power factor, Glow starter type  
without fluorescent lamp

**Material** · Body : 15:Resin  
O4:Steel

**Lamp** · Goobe : Acrylic (Milky)  
· JIS standard lamp tube : G5 8W  
· standard lamp tube :  
G13 10W / 15W / 20W

**Option** · on/off switch and socket

**Connection** · 05/09 : coaming

· 17 : 20Fx2

· Terminal board : JIS F8812/O-20-2P/4P

**Optional**

**specification**

· IEC standard lamp type · R (with emergency lamp)

· 20W High power factor · Clear globe

· 50Hz type

Model	AC100V60Hz			Protection degree IP	Weight kg
	AC100V60Hz	AC115V60Hz	AC220V60Hz		
FLBTM-8115 / R	A1507006732 / A1507006734	A1507006733 / A1507006735	A150700671 / A1507006736	IP20	0.8
FLBTM-1115 / R	A1507002121 / A1509002215	A15070021 / A1509002117	A1507002125 / A1509002118	IP20	0.8
FLBTM-5115 / R	A1507001521 / A150700160	A150700154 / A150700165	A150700157 / A150700166	IP20	1.0
FLBTM-8104 / R	A1505001701 / A1505001703	A1505001702 / A1505001704	A15090039 / A1505001705	IP20	1.1
FLBTM-1104 / R	A15050017 / A1505001706	A150500172 / A1505001707	A150500173 / A1505001708	IP20	1.5
FLBTM-5104 / R	A150500193 / A15050198	A150500195 / A150500199	A150500197 / A1505001901	IP20	1.8
FLBTM-2104 / R	A150900332 / A150900337	A150900335 / A150900339	A150900356 / A150900340	IP20	2.1
KS-1558 ※1	A15050023	A15050024	A15050025	IP20	1.8