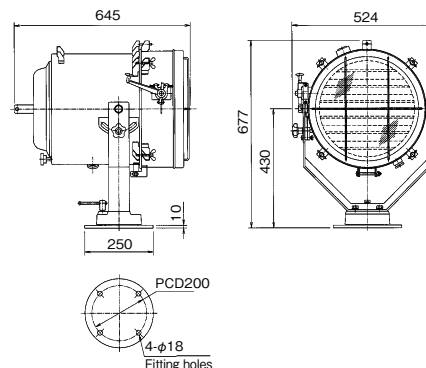


INCANDESCENT SEARCHLIGHT with SHUTTER

- Turning, elevation, focus adjustment & shutter operation by manual control.
- Available electric shutter on request. ■ Available other lamp type (Xenon, Metal halide, Halogen) on request.

BDS-30SU <1kW>

Reflector dia.	φ340mm
Lamp model	G110 E39/45 1000W
Voltage	AC100V/AC220V
Max. luminous intensity	600,000cd
Beam spread	Approx. 6°
Elevation angle	Up 30° Down 45°
Turning angle	Left & right each 170°
Protection degree	IP56
Weight	51kg
Code No.	1012BDS



REMOTE CONTROL BOARD - JOYSTICK TYPE -

For Incandescent lamp & Halogen lamp

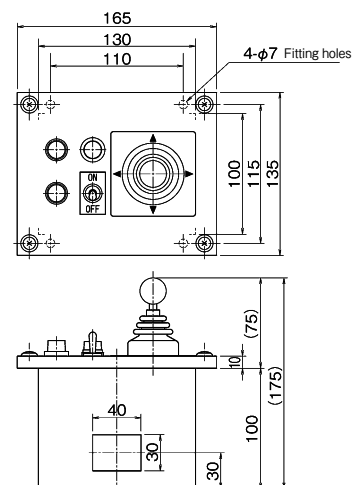
(Need to prepare the lamp power circuit separately.)



CPF28

CPF28

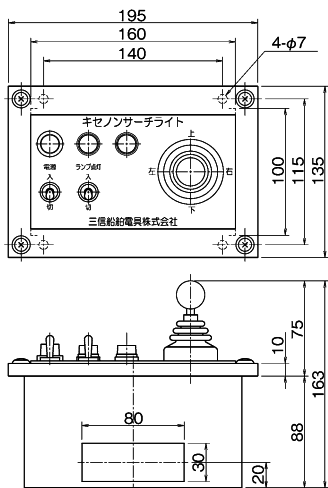
Code no.	12CPF28
----------	---------



For xenon lamp / Metal halide lamp

CPF118

Code no.	12CPF118
----------	----------



For Xenon lamp / Metal halide lamp

(Included auto focus switch)

CPF119

Code no.	12CPF119
----------	----------

